



LABOSPORT

TEST REPORT

Laboratory tests on an infill material for artificial turf system

Tests performed according to the standards listed in the quote Q24335CAN

Report Number **R24335CAN-A1**

Product **Guardian TPE**

Client **Alex Hanson Garner,
Guardian Sports, 3044 Adriatic Court, Peachtree Corners, GA 30071**

Date **March 26, 2024**

This report contains 4 pages in total. Reproduction of this report is authorized only in its entire form. Results reported are valid only for the products tested. To declare the conformity (or not), the uncertainty of the results was not taken into account. Detailed results are available on request.



<https://labosport.com>
Labosport Canada

LABOSPORT, THE WORLD LEADING SPORTS SURFACES EXPERT

INFORMATION

Product description	Performance infill for synthetic turf system: TPE			
Product name	Guardian TPE			
Product type	Thermoplastic Elastomer			
Sample Number	036657 (LSFR)			
Date of reception	March 2024			
Date of tests	March 2024			
Temperature	MIN	22°C	MAX	24°C
Humidity	MIN	49 %	MAX	51 %



Guardian TPE – sample #036657 (LSFR) – Top: General view, Bottom: Close-up view after wearing

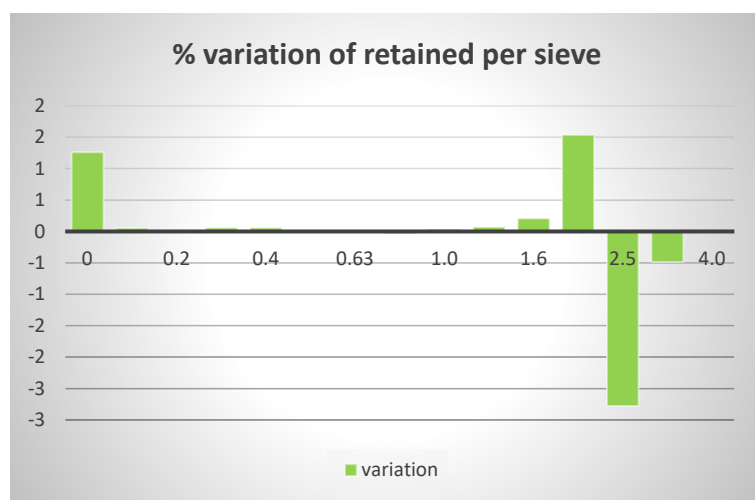


RESULTS - FRIABILITY – ROLLER INFILL

Test protocol: Friability of an infill measure its resistance to mechanical wear by usage, which conduct changes of its particles size distribution. The greater variation in particles size distribution, the greater the friability. This test method consists in the evaluation of a product friability by comparison of its particles size distribution before and after being processed through cycles of Labosport Roller Infill equipment for simulated wear of performance infill.

Property	Test method	Condition – 15000 cycles		Comparison	Current PrEN 15330-5 requirements	Pass/Fail
		New	After wearing*			
Particle size	EN 933-1	2.500 – 3.150 mm (6 mesh – 8 mesh)	2.000 – 3.150 mm (6 mesh – 10 mesh)	Correlation: 89 %	Correlation: > 40%	Pass
% of infill ≤ 0.063mm (230 mesh)	EN 933-1	0 %	1 %	Variation: +1%	< 5%	Pass

*After Labosport Roller Infill simulated wear following EN 15330-5-annex C test method

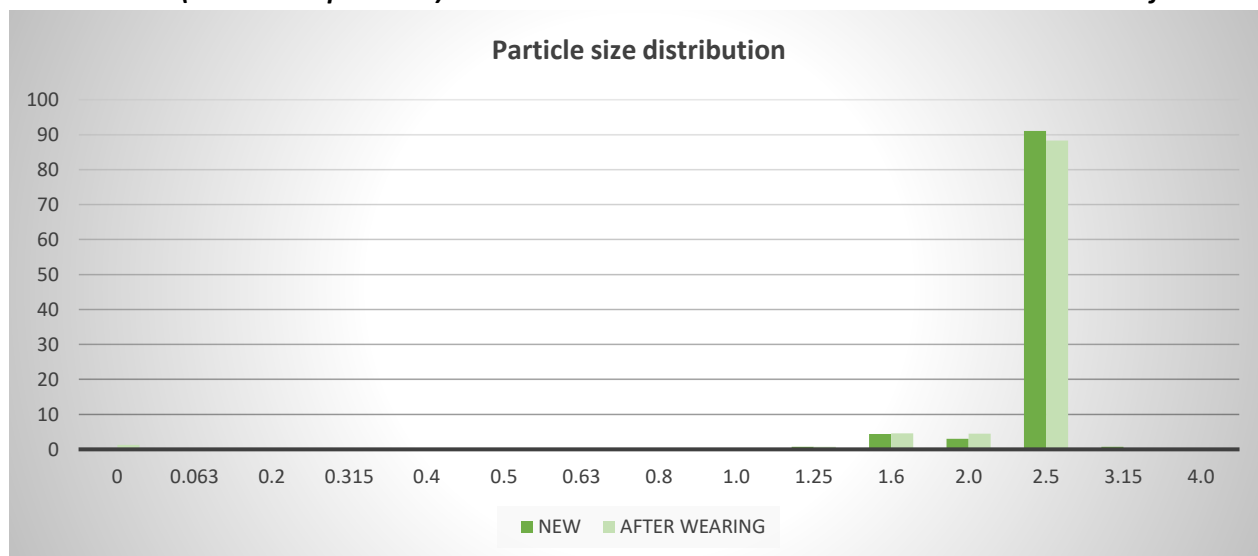


Variation (% retained per sieve)



New

After wearing




Particle size distribution

REPORTED BY



Laurent LACHAUSSÉE
(Laboratory Manager) - Writer



Thomas AMADEI
(General Director) – Writer/Approver